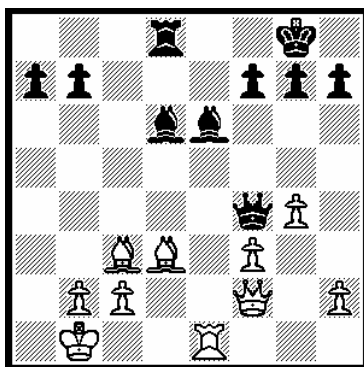
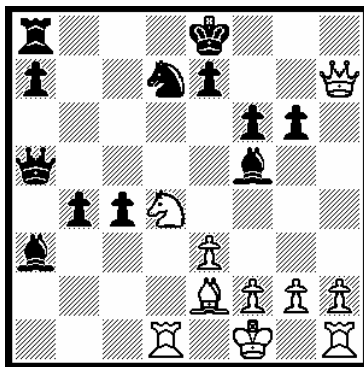


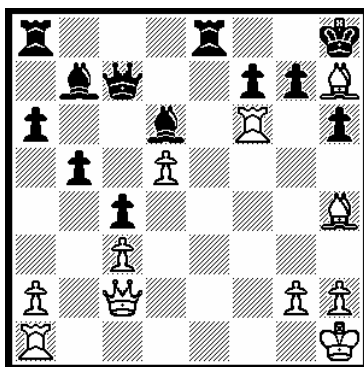
Some interesting variations from the Metropolitan Club a-grade Open 2009 some played some not.



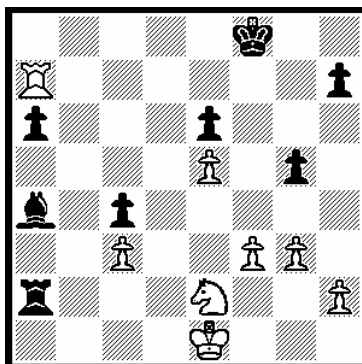
J.Fedec v. G.Viswanath
 24.Qh4 Rc8 (24.....Rb8, 25.Qxh7+ Kf8, 26.Rxe6 Rxe6, [26.....f6, 27.Rxf6+], 27.Qxg7+ ke8, 28.Bb5+),
25.Qxh7+ Kf8, 26.Rxe6 fxe6
 (26.....f6, 27.Qh8+ Kf7, 28.Bg6+ Kxe6, 29.Qxc8+ Kd5, 30.Bf7++),
 27.Qxg7+ resigns.



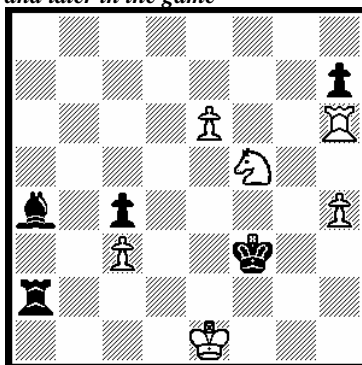
M.Vlietstra v. P.Roza
 23.Bxc4 e6 (23.....Qc5 [23.....Qb6, 24.Nc6 or 23....Ne5, 24.Nxf5],
 24.Qg8+ Nf8, 25.Qf7+ Kd2,
 26.Ne6+), 24.Qg8+ Nf8, 25.Bb5+
 Ke7, 26.Nc6+.



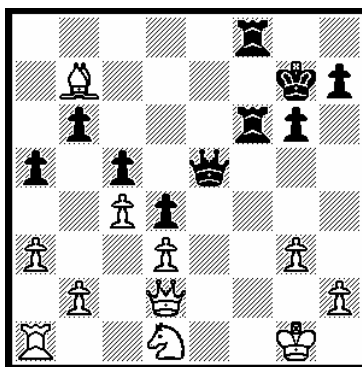
R.Shaw v. R.Lilly
 25.Rxh6 bxd5 (25.....f6, 26.Bxf6 gxf6, 27.Bg6+ Kg8, 28.Bxe8 Bf8,
 29.Qg6+ Bg7, 30.Rf1 Qe7, 31.d6 Be4 [31.....Qd7, 32.Qh7+ Kf8,
 33.R(f)xf6+], 32.Rh8+ Kxh8,
 33.Qh5+), 26.Bg8+ Kxg8, 27.Qh7+



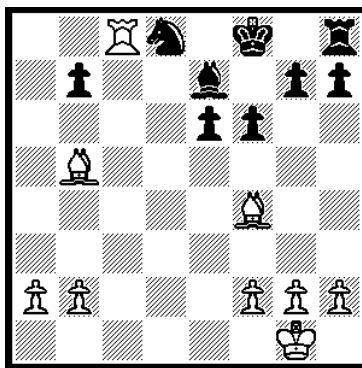
R. Lilly v. P.Roza
 47.Nd4 Rxh2, 48.Nxe6+ Ke8,
 49.Rxa6 Bc2, 50.Nxg5.
and later in the game



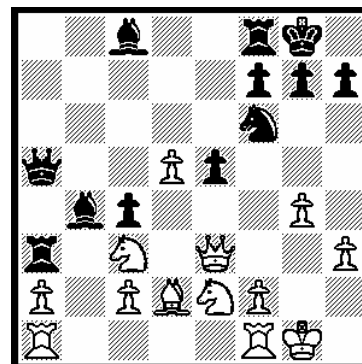
54.....Ra1+ Kd2, 55.Rd1#



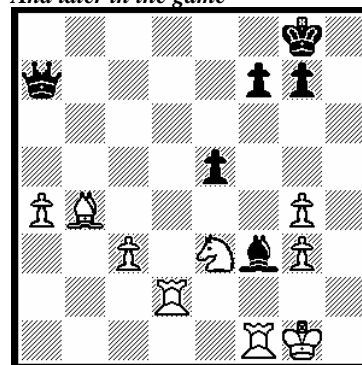
R.Lilly v. J.Fedec
 26.....Rf1+, 27.Kg2 Re1. 28.Bf3
 Rxf3, 29.Kxf3 Qh5+, 30.Kg2 Re2+.



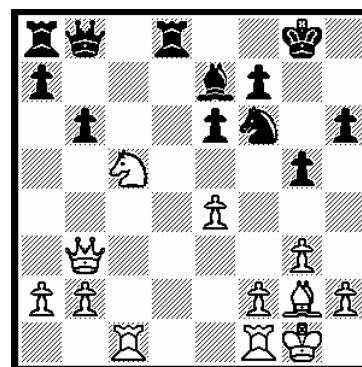
R.Shaw v. Y. Choong
 23.Bd6 resigns if....Kf7, 24.Rc7 Nc6,
 Bxc6 bxc6, 26.Bxe7 Ra8, 27.Ba3+.



M.Vlietstra v. G.Viswanath
 20.....Nxd5, 21.Qxe5 Nxc3, 22.Bxc3
 Bxc3, 23.Qxa5 Bxa5.
And later in the game



32.....Qxe3+, 33.R(d)f2 Bd5,
 34.Rb1 Qxg3+ 35.Kf1 Bc4+, 36.Re2
 Qf3+, 37.Kg1 Bxe2.



S.Kurniawan v. R.Lilly
 19.Nxe6 Rd7 (19.....fxe6, 20.Qxe6+
 Kh8 [20.....Kf8, 21.e5 Ng8, 22.Be4
 Bf6, 23.exf6 Re8, 24.Qd7 Nxf6,
 25.Qf5 Qe5, 26.Qxe5 Rxe5,
 27.Bxa8], 21.e5 Ng4 [21.....Ng8,
 22.Be4 Rd4, 23.Bxa8 Qxa8, 24.Rc8],
 22.Bxa8 Qxa8, 23.Qxe7), 20.e5 Ng4,
 21.Nc7 Rxc7, 22.Rxc7 Qxc7,
 23.Bxa8.